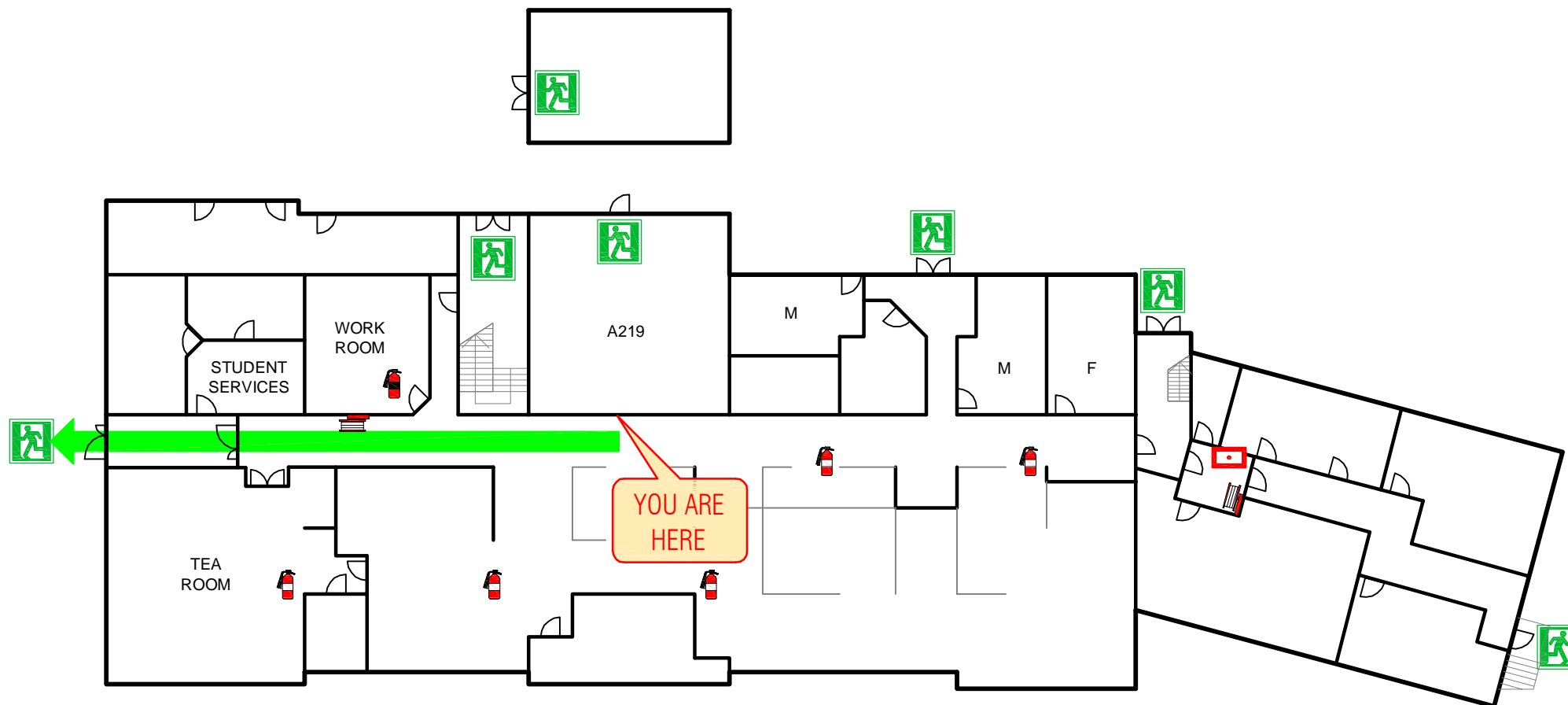


# BUILDING EVACUATION DIAGRAM



## LEGEND

- |                    |                  |                     |
|--------------------|------------------|---------------------|
| EXIT               | DRY CHEMICAL EXT | BREAK GLASS ALARM   |
| MAIN EXIT CORRIDOR | FIRE HOSE REEL   | CO <sup>2</sup> EXT |
|                    |                  | ASSEMBLY AREA       |

## MAIN BUILDING LEVEL 2

ISSUE A 12 Oct 2009

REALSERVE prepared by:  
www.realserve.com.au

## IN CASE OF FIRE

### SAFETY CONSIDERATIONS

#### REMOVE PEOPLE

IF IN DANGER TO THE ASSEMBLY AREA

#### ALERT OTHERS - RAISE THE ALARM

NEARBY RESIDENCE AND MEMBERS OF THE PUBLIC

#### CONFINE FIRE & SMOKE

CLOSE ALL WINDOWS & DOORS (IF SAFE TO DO SO)

#### EVACUATE TO ASSEMBLY AREA

REMAIN AT ASSEMBLY AREA (IF SAFE TO DO SO)

### IN CASE OF EMERGENCY

FIRE / POLICE / AMBULANCE

## RING 000

### FIRE EXTINGUISHER OPERATION

- Stay back from fire 2 - 3 metres
  - Check Pressure Gauge
  - Ensure door or clear exit path is directly behind you
  - Use the PASS method
- P - pull pin  
A - aim at edge of fire  
S - squeeze the handle  
S - sweep the fire

### EVACUATION PROCEDURES

1. Remain calm. Do not panic
2. Leave building by designated exit or nearest safe exit
3. Proceed to the closest ASSEMBLY AREA (see map), or as directed by staff / Emergency Services
4. Remain at ASSEMBLY AREA until otherwise directed by Staff / Emergency Services

### EVACUATION SITE

